

Motorized Roller Blind / Roman Blind

ATF45



- Perfect fit for large and high windows.
- Black-out operation is also available with Side Rails.
- Roller and Roman both options possible.

ATF45

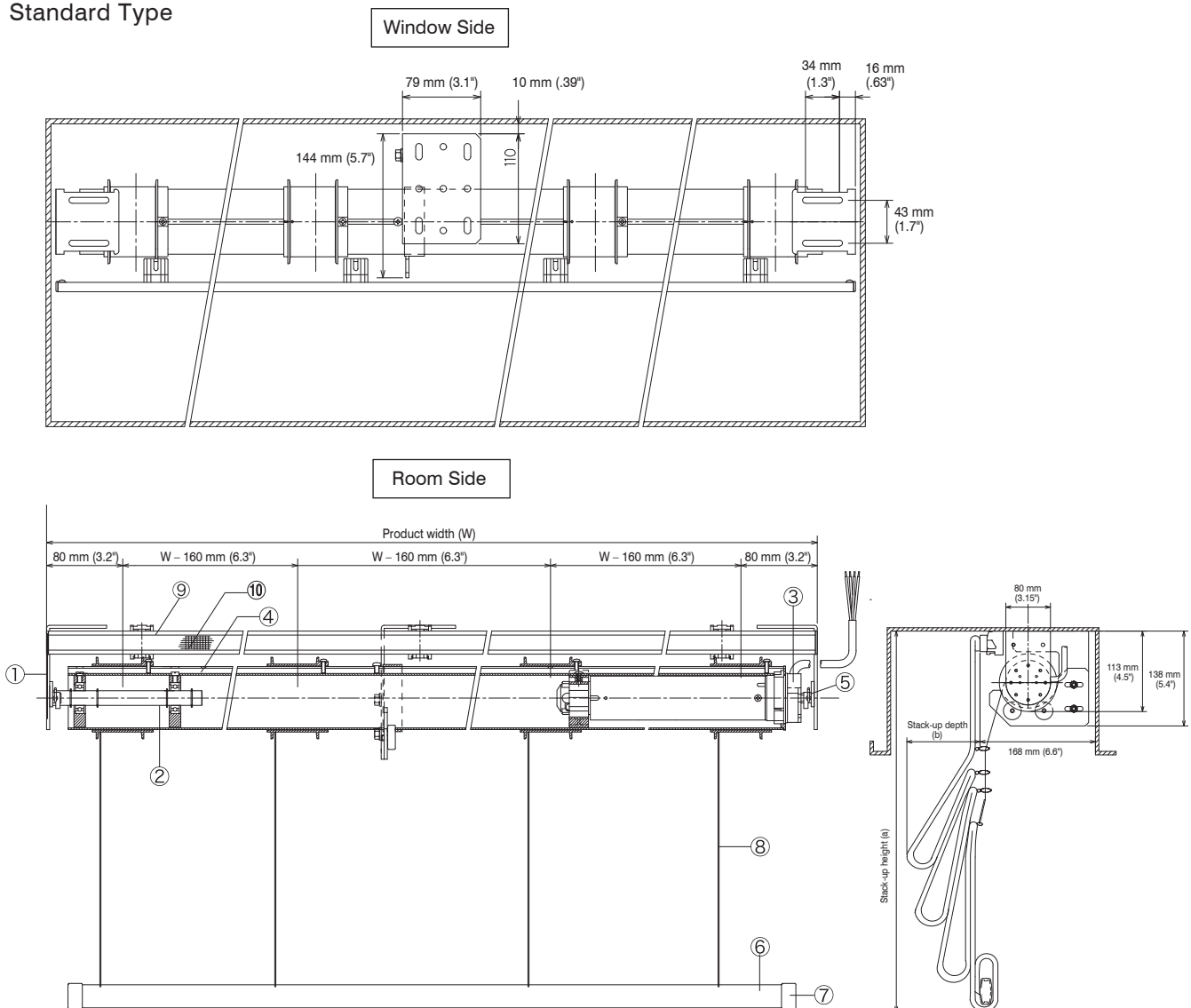
ATF45's Unique Features

- With a high torque motor, ATF45-RB performs a quiet operation.
- Fit for a large or high window: up to 4 mtr. in width or 5 mtr. (197") in height.
- A black-out type is available with Side Rails.
- Roman Blind Pulleys and Velcro Tracks available.



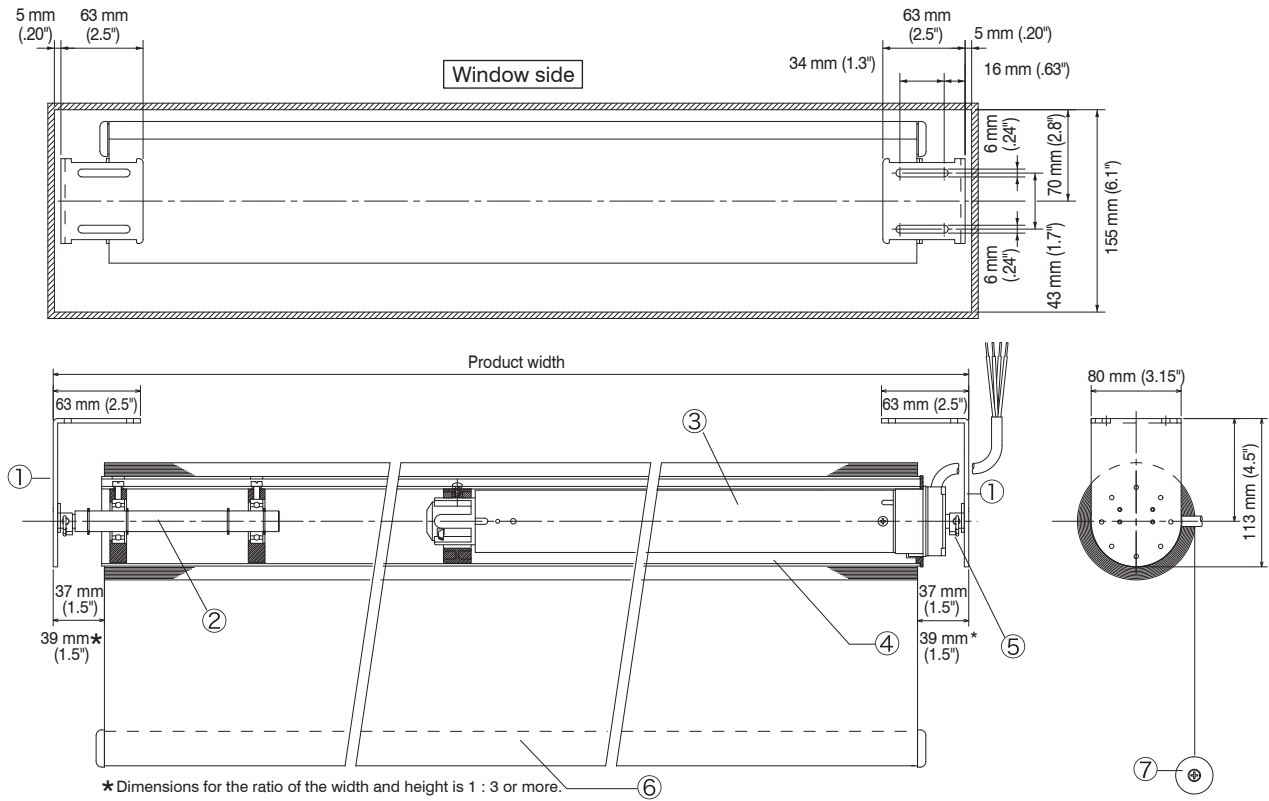
Structure Drawing - Roman Blind

Standard Type

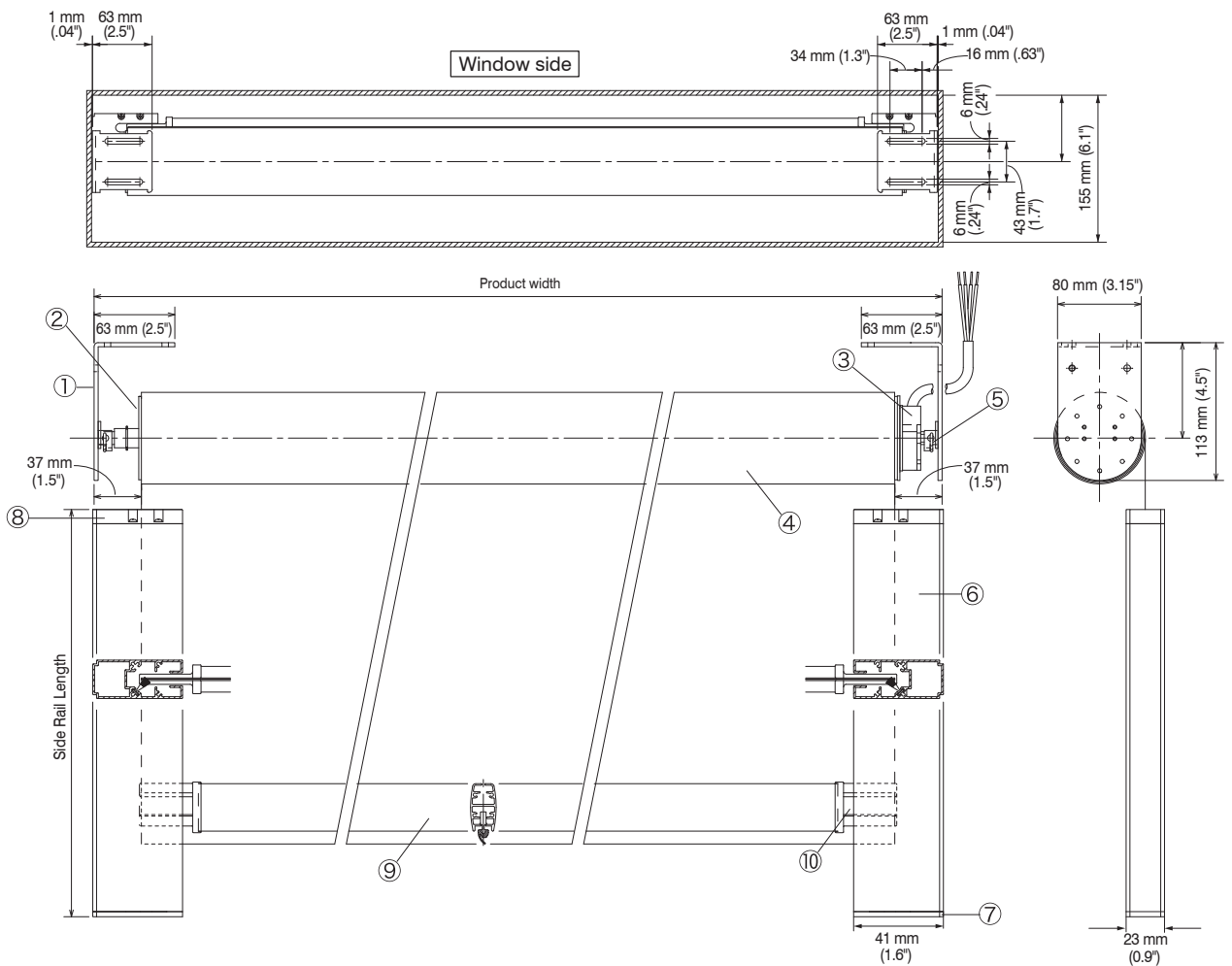


Structure Drawing - Roller Blind

Standard Type



Black-out Type



Components and Materials

Standard Type - Roman / Roller Blind

No.	Components	Material	
①	ATF45 Side Bracket	Steel	
②	ATF45-N Pipe End	Steel + Zinc die-cast	
③	ATF45-N Tubular Motor Set	Motor	
		Drive	Polyacetal resin
		Limit Crown	Polyacetal resin
④	ATF45 Roller Pipe Ø 60	Aluminum	
⑤	Split Pin	Steel	
⑥	Weight Bar	Stainless steel	
⑦	Weight Bar Cap	Stainless + Rubber	
⑧	Lift Cord Ø 1.2	Polyester Fiber	
⑨	Freel Head Rail	Aluminum	
⑩	RS Slide-in Velcro	Polypropelene	

Black-out Type - Roller Blind

No.	Components	Material	
①	ATF45 Side Bracket	Steel	
②	ATF45-N Pipe End	Steel + Zinc die-cast	
③	ATF45-N Tubular Motor Set	Motor	
		Drive	Polyacetal resin
		Limit Crown	Polyacetal resin
④	ATF45 Roller Pipe Ø 60	Aluminum	
⑤	Split Pin	Steel	
⑥	Side Rail For Black-out	Aluminum	
⑦	Side Rail Cap For Black-out	Polyamide	
⑧	Side Rail Guide For Black-out	Polyamide	
⑨	Weight Bar For Black-out	Aluminum	
⑩	Weight Bar Cap For Black-out	Polyacetal resin	

Motor Specifications

Power Source Voltage	V	AC220-230
Frequency	Hz	50/60
Current	A	0.77
Power Consumption	W	170

Rated Torque	Nm	5
Rated RPM	rpm	24/29
Rated Running Time	min	4
Ambient Temperature	C	-10-40

Allowable Size

	Standard Type	Black-out Type
Width	800-4000 mm (31-98")	800-2000 mm (31-79")
Height	800-5000 mm (31-197")	800-3000 mm (31-118")
Max Surface area	20 m ²	6 m ² (7 yd ²)

*Maximum dimension may change according to the width or thickness of screen

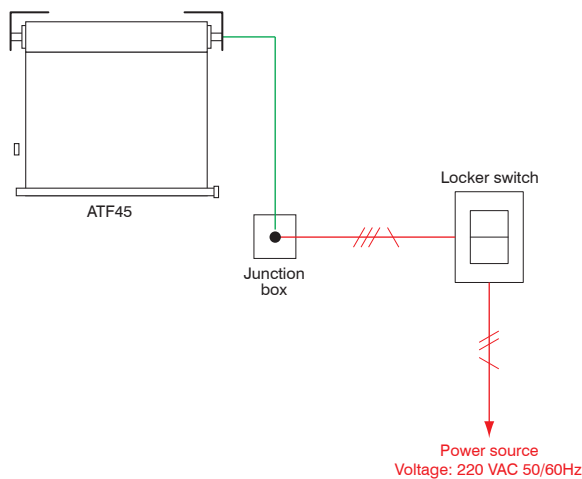
Product Weight

8 kg

Basic Wiring and Connecting Diagram

Single Operation

Basic Wiring Diagram



Basic Connecting Diagram

